

Transforming Big Data to Bottom Line Results

April 5, 2017



Stephanie Cross
Manager, Paper Production Services
Somerset
Sappi North America

sappi
Inspired by life

Transforming “Big Data” to Bottom Line Results

BUSINESS CHALLENGE:

Reduce the number of edge breaks on the paper machine

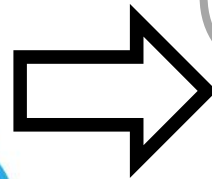
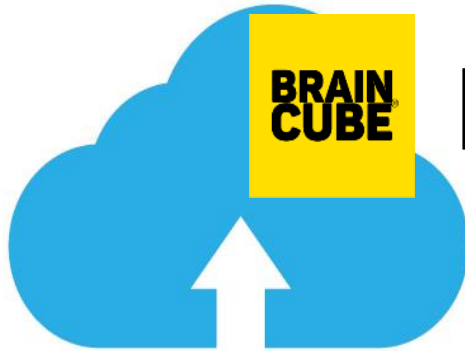


“I don’t necessarily need more data. I need something that quickly and efficiently takes the data we have and turns it to sustainable bottom line results”

– Paper Machine Manager

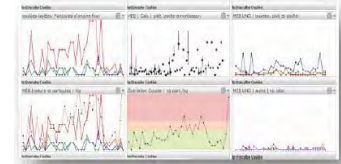
Braincube as a Software Solution

BIG DATA ARCHITECTURE



1

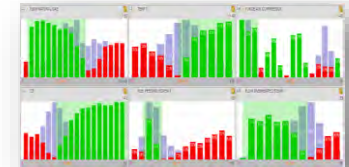
DATA ACQUISITION
From all your sources



Measure

2

CONTEXTUALIZATION
Structure data in 'process centric' context



Analyze

3

DECISION
Generate solutions from your analysis



Improve

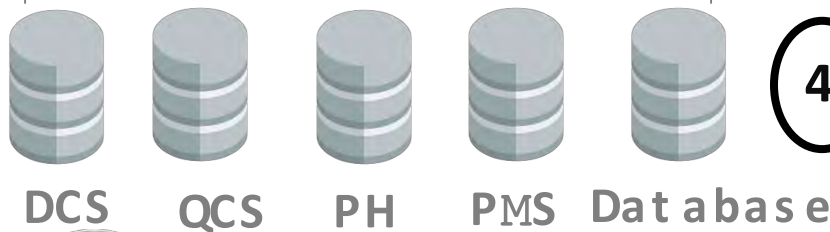
4

ACTION
Run under optimize standards



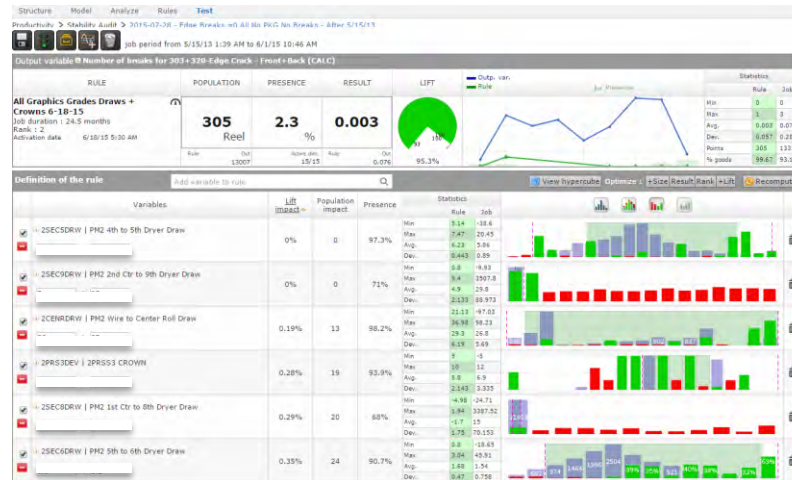
Control

REAL TIME,
DYNAMICALLY
MODELED DATA



Transforming “Big Data” to Bottom Line Results

1. Used Braincube to analyze 4 years of data, from pulp mill through paper machine (>3,000 variables)
2. Within minutes found a “sweet spot” of operation to reduce break risk (15 variables)
3. Used Braincube to determine if other KPI’s would be adversely affected by the recommended limits
4. Implemented the recommended centerlines in the operator control strategy
5. Validated real time results



BOTTOM LINE RESULTS : Reduced the number of edge breaks on the paper machine by over 50%